

ASSEMBLY & INSTALLATION NOTES

JUBU Rear-wing bracket CUP (4-step adjustable) (JU00246PRD)

for Elise S3 CUP

Please follow the instructions in this manual for a proper assembly & installation of the JUBU Rear-wing bracket CUP (4-way adjustable) for Elise S3 CUP.

Please find in this document:

1. PART LIST
2. ASSEMBLY & INSTALLATION NOTES
3. ADJUSTMENT OPTIONS

1. PART LIST for product JU00246PRD

#	ITEM	ART-NO.	UNITS
1	Rear-wing bracket CUP (4-step adjustable)	JU00884ART	2
2	Lens head screw ISO 7380-2 M5x12 titanium black	JU01242ART	4
3	Lens head screw ISO 7380-2 M5x18 titanium black	JU01243ART	4
4	K-Nut M5 titanium black	JU01226ART	4

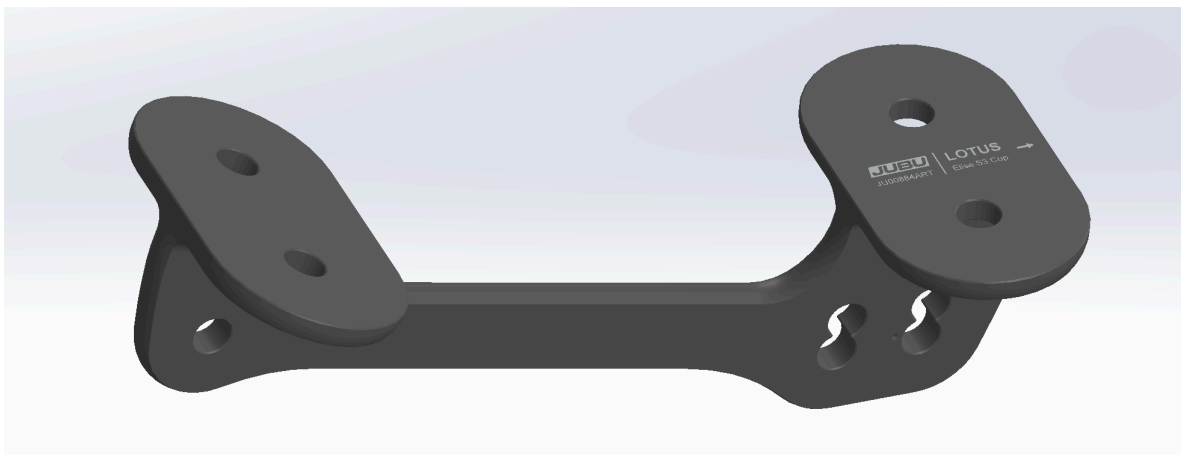


Fig 1: Rear-wing bracket CUP (4-way adjustable)

2. ASSEMBLY & INSTALLATION NOTES

Level of difficulty: **EASY**

Required time: **0.5h - 1h** (depends on experience, available tools & skills)

1. Disassemble the OEM wing brackets
2. Bolt on the JUBU adjustable wing-brackets (1) to the wing-blade by using 4x M5x12 lens head screws (2), fix them with screw lock *LOCTITE 243 screw locking lacquer* and tighten them with 6Nm.

⚠ NOTE: The adjustment options are in the front (viewed in the direction of travel)!

3. Mount the wing-blade back to the car using 4x M5x18 lenshead screws (3) together with M5 K-nuts (10), fix them with screw lock *LOCTITE 243* and tighten them with 6Nm.

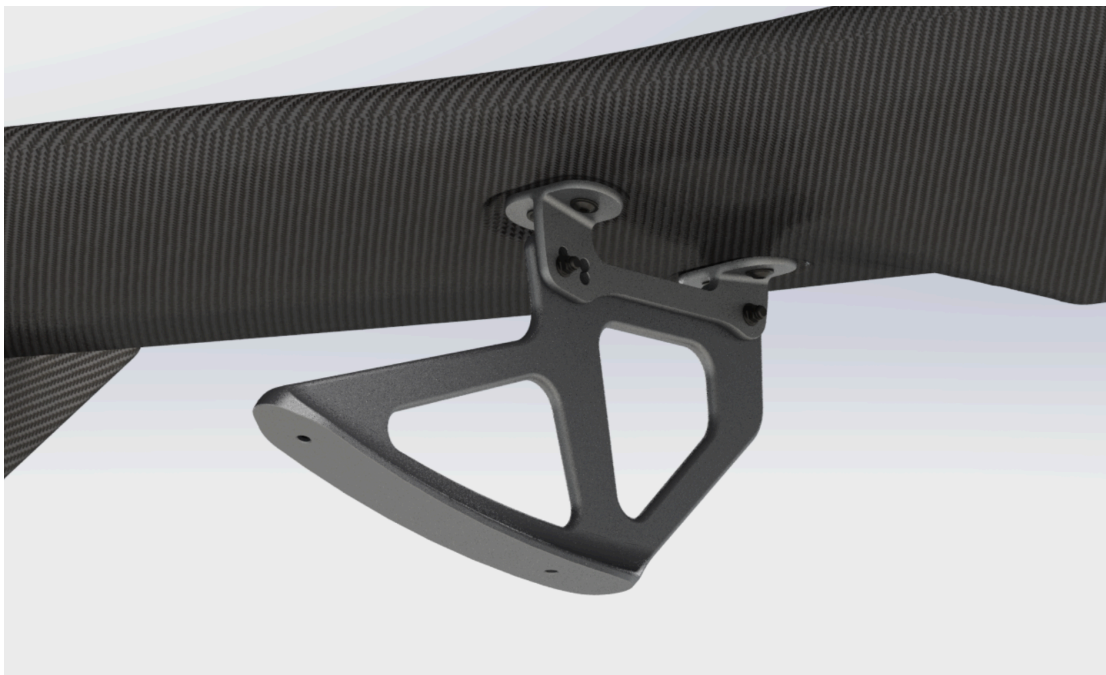


Fig 2: Mounted JUBU rear wing brackets to the wing

3. ADJUSTMENT OPTIONS

- The standard (OEM) position of the rear wing is marked yellow in *Fig 3*. (also marked at the wing bracket with a small milled dot)
- If more downforce is required one of the holes above can be chosen. (2 steps possible)
- If less downforce is required choose the one hole below. (1 steps possible)
- The wing angle changes by 1.5° each step.

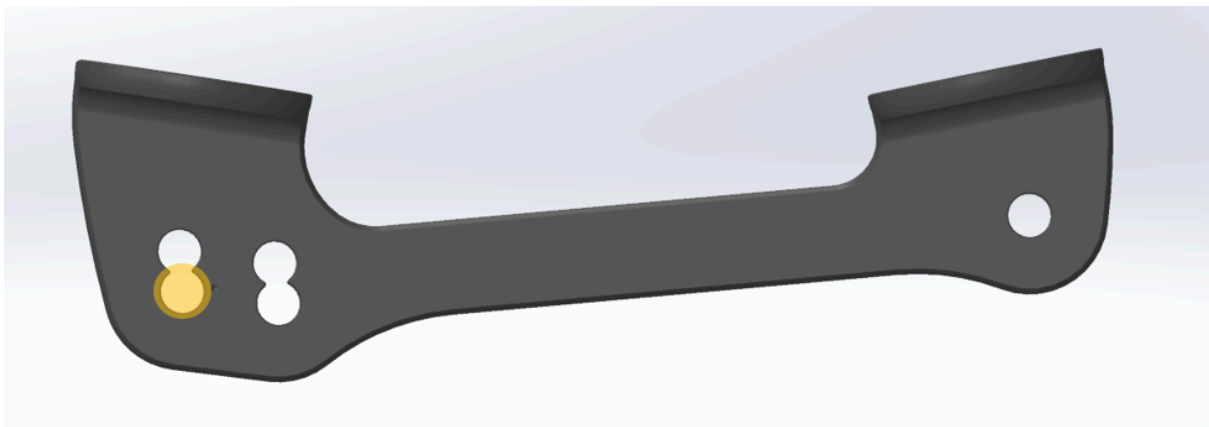


Fig 3: Adjustment options provided by the wing brackets (8)

If you have any questions or need additional information, please contact us by email:

info@jubu-performance.com

JUBU Performance GmbH
Saxenegg 3a, 4323 Münzbach, AUSTRIA